



Dedicated personnel

World class storage systems

Powerful ideas

Specialist in best practice

QUEBEC

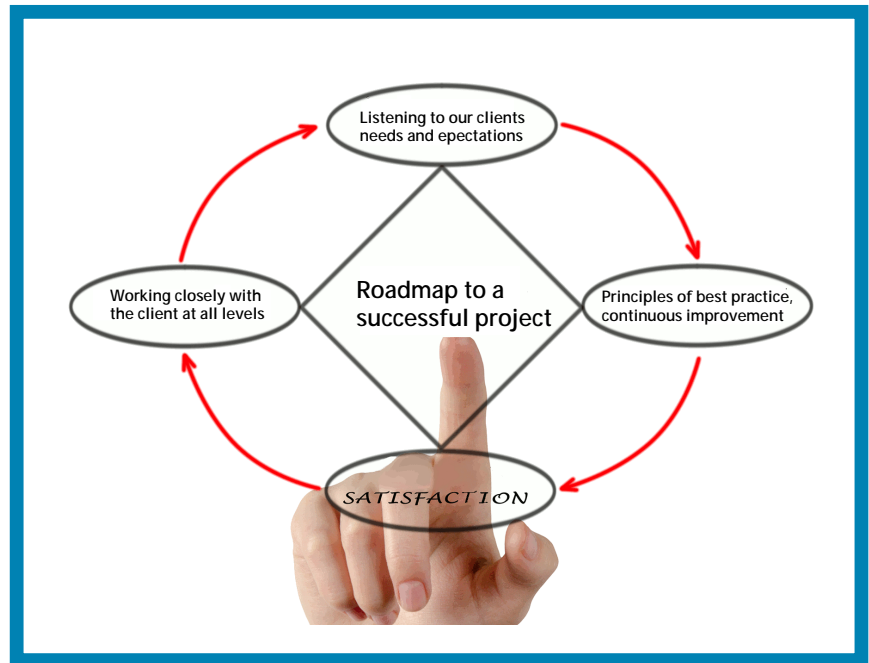
Meriton Industries
108 Gun Ave.,
Pointe-Claire, QC H9R 3X3
1-800-465-3695
info@meritonindustries.com

Our key business principles for your success.

Total solutions provider

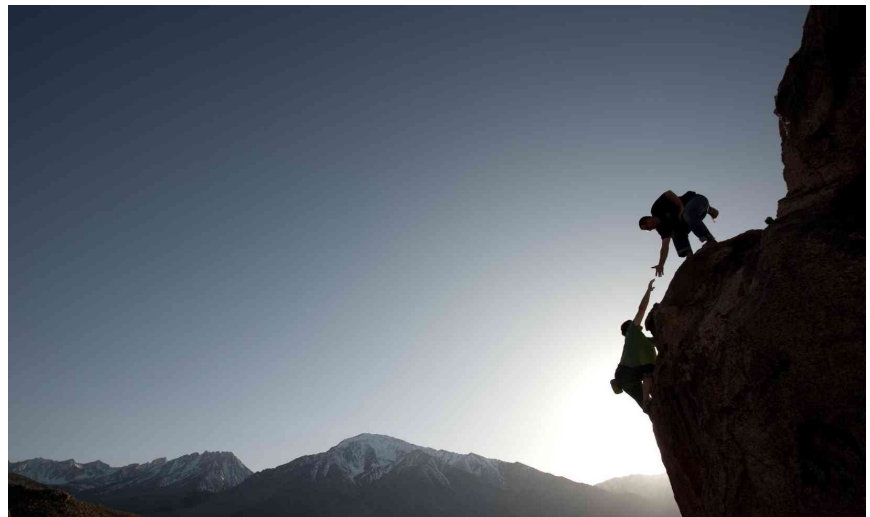
Meriton is a total solution provider. As designers, manufacturers and integrators we are specialists that build industry-specific solutions for both supply only and supply/install projects.

Your turnkey project can be managed professionally from concept to implementation by our experienced personnel.



World class quality

Our powerful ideas become products that can revolutionize your operation and your bottom line. Completely new concepts with no compromise in the manufacturing process will ultimately provide longevity and efficiency that you can depend on to take your business to the next level.



Growth through customer satisfaction

Whether we design a custom-built product for a special application or propose an off-the-shelf solution for the budget conscious buyer, depend on it: we are never satisfied until you are.

Our goal of achieving a 100% client satisfaction rating is only achievable by close collaboration and teamwork to enable us to fully understand your needs and by managing the production and fulfillment cycles so that your chosen solution is implemented seamlessly. Ultimately, making your goal ours means a win-win all around.



Leading supplier to these industries:

FOOD INDUSTRY



METAL & PLASTIC FABRICATING



PHARMACEUTICAL



WAREHOUSE & LOGISTICS



HARDWARE & ELECTRONICS



DISTRIBUTION CENTERS



MERITON - A LEADER IN THE INDUSTRY SINCE 2005

Whether it is a new location or a complete reorganization Meriton is your performance partner to deliver an avant-garde, world-class solution. We are totally dedicated to our client's interests and our experienced personnel are on call to assure your project is a success from inception to completion.

Need help in planning a new layout? Looking for a better operations efficiency or order throughput? You can trust us with the more difficult aspects of your expansion or new installation. Our many years of experience allow us to design the ideal way to integrate your storage system for maximum efficiency and space utilization.

The emphasis we put on quality is evident in every facet of our operation. Our no-compromise policy applies as much to the quality of the components as to the finished, installed product. We respect current storage system standards such as CSA and CSST as well as the National Building Code.

We look forward to partnering with you on a project in the near future!

INDEX

Accordion gate.....	36	Pallet flow rack.....	30
Bollard.....	42	Parts bins.....	17 - 21
Bar grate flooring.....	24	Parts storage system.....	5, 8, 11-16
Boltless shelving.....	12 - 14	Pedestrian barriers.....	38 - 42
Back panels, racking.....	41	Pedestrian safety gate.....	37
Barriers, pedestrian.....	38 - 42	Pipe storage.....	32
Barriers, machine guard.....	41 - 42	Picking systems.....	8, 11, 22
Barriers, accordion.....	36	Protectors (see also Guards).....	42
Barriers, roof.....	40	Protectors, end of row.....	42
Barriers, high impact.....	41	Post protector, all types.....	42
Cabinets, storage.....	5 - 7	Pushback racking.....	27
Cabinets, modular.....	5 - 7	Rack, back guard panels.....	41
Cabinets, parts.....	5 - 7	Rack, cantilever.....	31
Cabinets, Maxstor.....	5 - 7	Rack, drive-in.....	28
Column protector.....	42	Rack, dynamic.....	27
Carton flow shelving.....	11	Rack, double deep.....	26
Drop in panels.....	6	Rack, pushback.....	27
Flow racks, boxes.....	11	Rack, pallet flow.....	27
Flow racks, pallets.....	30	Rack, selective (pallets).....	25
Gates, self-closing.....	37	Rack, stacking.....	34
Gates, accordeon.....	36	Railing system.....	38, 40
Gates, ladder.....	37	Reel rack.....	33
Gravity flow racks (pallet).....	30	ResinDek flooring.....	24
Guards.....	38, 42	Rod Storage.....	32
Hatch Safe, Hatch Grip roof safety.....	39	Roof safety.....	39 - 40
Ladder gates.....	37	Safety bars.....	43
Maxstor.....	5 - 7	Screen protector.....	38
Mezzanine, structural.....	23 - 4	Security enclosure.....	35
Mezzanine, rack-supported.....	22	Shelving, parts.....	11 - 16
Mezzanine, barrier.....	44	Shelving, boltless.....	13 - 15
Mini-rack.....	16	Shelving, carton flow.....	11
Mould & die racks.....	33 - 4	Shelving, high density.....	11
Open steel plank (OSP).....	24	Shelving, mezzanine.....	22
Pallet support bars.....	30	Shelving, picking.....	11, 22
Pallet rack.....	see Rack	Speedcell.....	8
Pallet rack protection.....	see Protectors	Stackracks.....	34
		Wire mesh decks.....	43

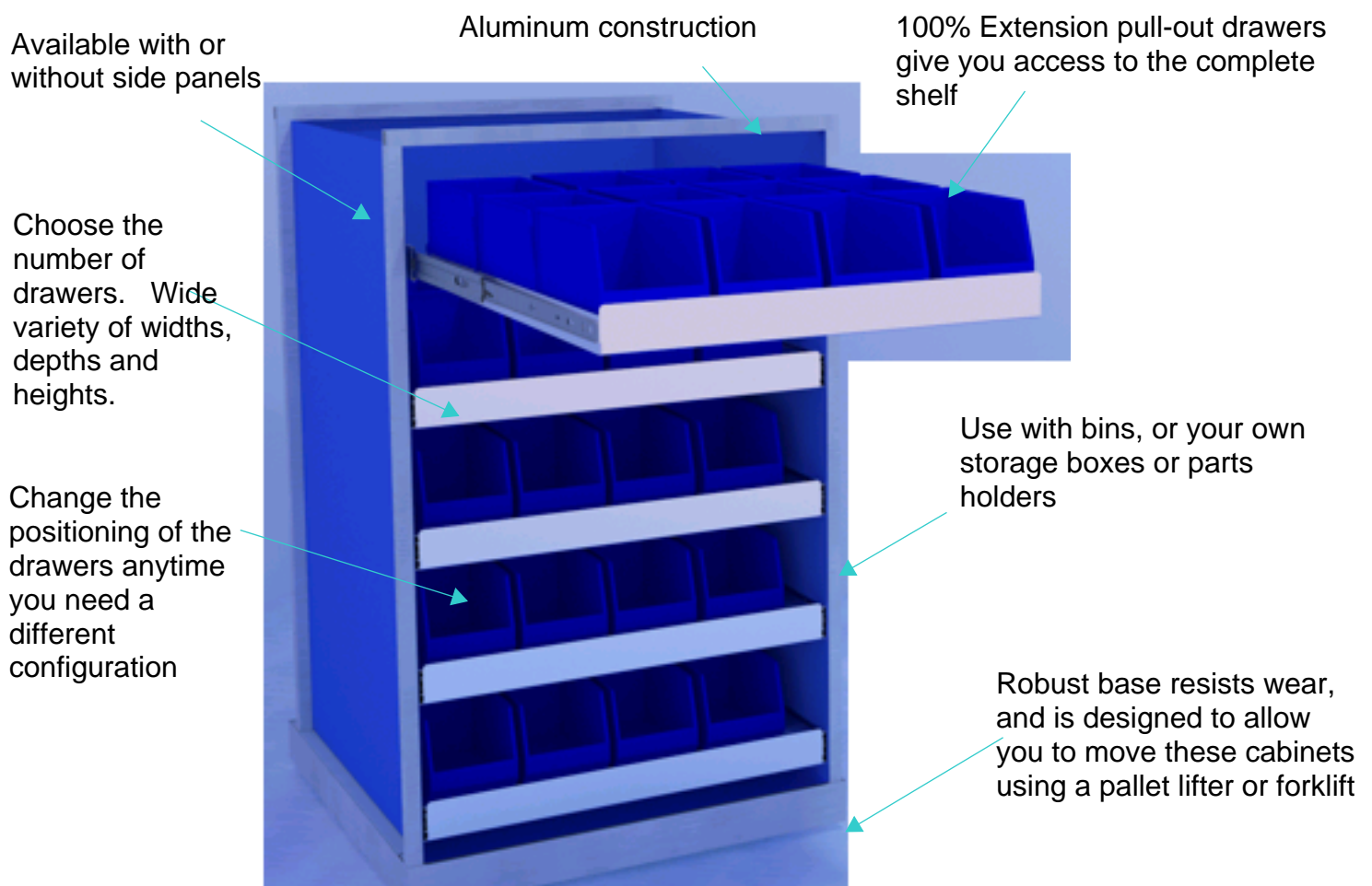
MAXSTOR MODULAR CABINETS

Affordable parts storage - cost less than traditional fixed storage cabinets, yet offer more.

High-density European design is ergonomic, and available in many different configurations to suit your application

Change your cabinet configuration anytime by moving the drawers up or down.

Cabinet may be moved around with a pallet lifter or forklift



MAXSTOR STORAGE CABINETS

These super strong storage cabinets were designed to be a storage solution for a wide variety of items including parts, small to medium boxes, electronic components, hardware, fasteners and more. Based on a European design that allows the end user to change the configuration of the drawers, they offer a more flexible use that can adapt to a change in your needs, your product and the location where they are used. These units will generally cost considerably less than standard parts cabinets, yet are designed to offer all the benefits plus some additional features.

APPLICATIONS FOR MAXSTOR

Use Maxstor for these applications

PARTS DEPARTMENTS



WAREHOUSE STORAGE AREAS

Maxstor can be ordered in specific sizes to fit underneath your existing pallet racks. Using Maxstor in this way you optimize your picking efficiency with maximum access to your unit pick items at ground level.

Storage gain due to higher density: save between 35 - 50% in storage space due to the ultra-high density used in the Maxstor design.

Gain in picking labour: save between 25 - 40% in labour with higher picks per hour, less fatigue on the part of the order pickers, and overall improvement in morale and efficiency.

MAXSTOR SPECIFICATIONS

MAXSTOR SERIES 1000 (NO SIDE OR REAR PANELS)

Capacity 250 lb. per drawer

Available with as few as three drawers or as many as twelve.

Maxstor Series 1000 gives you all the advantages of this unique design at an advantageous price. Each drawer slides on 100% full extension drawer slides. The drawer positioning can be changed as needed. These units can be moved around using a forklift.

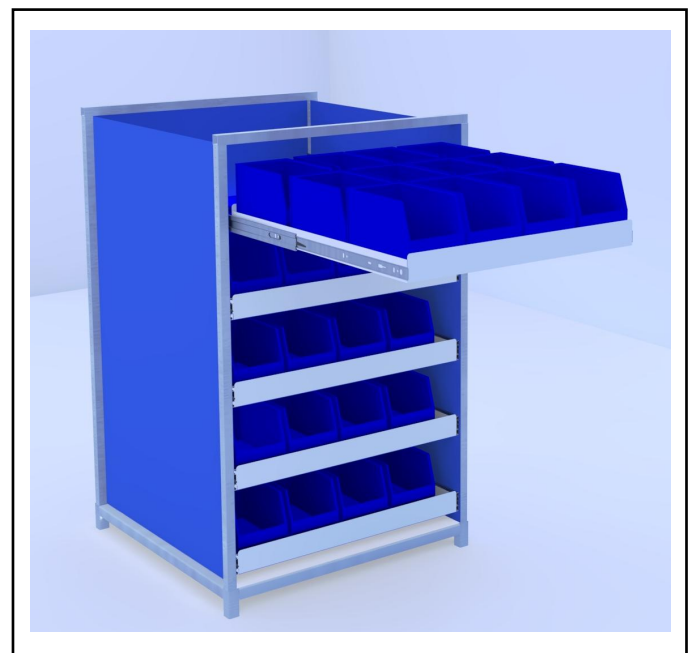


MAXSTOR SERIES 2000 WITH BINS (COMES WITH SIDES AND BACK)

Capacity 250 lb. per drawer

Available with as few as three drawers or as many as twelve.

Maxstor Series 2000 gives you all the advantages of this unique design in a strong sheet metal cabinet with sides and back. Each drawer slides on 100% full extension drawer slides. The drawer positioning can be changed as needed. These units can be moved around using a forklift.



PICKING SYSTEMS - SPEEDCELL



SPEEDCELL ULTRA-DENSE STORAGE & PICKING SYSTEM

Manage your space to store more goods

Maximize your picking at the floor level to save time and reduce worker fatigue

From this.....



Typical shelving installation for boxes and unit pick items

To this.



Ultra-dense Speedcell system installed under clients existing or new racks. Provides up to 40% more efficient storage and up to 35% greater picking efficiency.

PICKING SYSTEMS - SPEEDCELL



Stop underutilizing your warehouse space

Optimizing your picking space can be achieved by eliminating open space such as aisles, and compressing storage areas. Speedcell is a unique, extra-high density storage system for unit pick items and boxes that installs in your present racking. The typical installation increases space utilization by 40 - 60%

Save money and time

Speedcell also saves money by making your picking faster and more efficient. Each Speedcell compartment is 100% accessible from the front. The columns glide from right to left or left to right on rollers in a series of tracks. This dynamic movement of the columns is what eliminates wasted space, and allows a greater storage density of small to medium sized items.

Each compartment can hold an average of 10 - 20 lbs, while a column typically has a maximum capacity of up to 240 lbs. When your order fulfillment involves a large number of unit pick items Speedcell saves your team members valuable time and effort by reducing travelling time and footsteps. An average of 25 - 35% increase in picking efficiency is gained versus traditional storage methods such as shelving. Where picking is done with ladders or electric orderpickers an even greater increase can be realized.



PICKING SYSTEMS - SPEEDCELL



Side view of rack showing three rows of Speedcell installed in a single deep configuration.

How tough is Speedcell material?



Speedcell material has been used in the automotive industry for decades.

Speedcell columns are made from extremely tough industrial textile PVC double laminated on both sides, a type of material used in the automotive industry for transporting parts. The material is guaranteed against wear and defects for a period of five years.



PICKING SYSTEMS - HIGH REACH & GRAVITY



A. High reach shelving set up for use with a conventional electric orderpicker

HIGH REACH PICKING SYSTEMS

High reach picking systems are designed to maximize your space utilization for storage of small to medium size items. This method facilitates high reach picking using electric order pickers or ladders. We design and install parts storage systems with any number of levels and can install floor guides or wire guides for your equipment to operate without damage to the installation.



B. High reach shelving set up for use with a wave electric picker

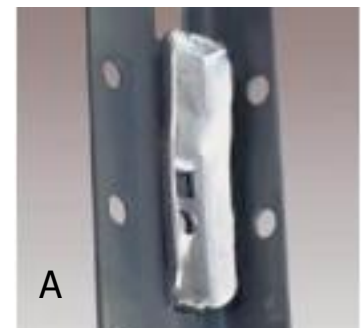


CARTON FLOW SYSTEM

Carton flow systems provide high density storage of multiple boxes of the same product or SKU. Designed with a series of conveyor-type rollers or wheels that enable the rear boxes to flow automatically forward by gravity when the front box is removed. Provides a dense configuration while ensuring a FIFO stock rotation. Also provides excellent stock visibility and increases efficiency all around, including order preparation.

To ensure proper functioning of the system a qualified technical rep will need to make an analysis of the type of boxes used, as well as the size and quantity of each SKU.

STANDARD PARTS SHELVING



A. Boltless shelves attach with clips for faster assembly. All shelves can be repositioned easily at any time.

CLOSED PARTS SHELVING SERIES 3500

This type of parts shelving provides metal panels at the rear of the section as well as side panels for between the sections. Dividers that are moveable or fixed may also be specified

STANDARD PARTS SHELVING



OPEN STYLE SHELVING #3500

This type of parts shelving uses X-braces to give structural rigidity to each section. A wide variety of accessories is available including extra heavy-duty shelves, dividers, pullout drawers and kickplates.



Boltless shelves attach with clips for faster assembly. All shelves can be repositioned at any time.

COLOUR CHART



Standard colour for Meriton Shelving is gray. The other colours shown are available upon demand, with an upcharge applicable for setup costs.

SHELF SIZES AND CAPACITIES

FLANGE SHELF CAPACITIES

SIZE	CAPACITY TYPE C	CAPACITY TYPE D
12" X 36"	400	775
12" X 42"	350	550
12" X 48"	300	450
15" X 36"	400	750
15" X 42"	325	525
15" X 48"	300	450
18" X 36"	400	750
18" X 42"	300	500
18" X 48"	275	425
24" X 36"	400	700
24" X 42"	300	500
42" X 48"	275	375
30" X 36"	300	550
30" X 42"	275	450
30" X 48"	225	350
36" X 36"	275	450
36" X 42"	275	450
36" X 48"	225	350



Flange Shelf

Flange shelves are supported back and front with a rolled lip underneath the shelf on the longest dimension. This not only increases the capacity but also the longevity. See the chart above for the respective capacities of flange and box type shelves.

BOX SHELF CAPACITIES

SIZE	CAPACITY TYPE A	CAPACITY TYPE B
12" X 36"	600	850
12" X 42"	450	650
12" X 48"	400	550
15" X 36"	600	825
15" X 42"	450	625
15" X 48"	400	600
18" X 36"	600	850
18" X 42"	500	650
18" X 48"	400	550
21" X 36"	600	850
21" X 42"	450	650
21" X 48"	375	550
24" X 36"	550	850
24" X 42"	450	650
42" X 48"	375	550
30" X 36"	500	650
30" X 42"	400	625
30" X 48"	375	500
36" X 36"	400	550
36" X 42"	350	525
36" X 48"	325	500



Box Shelf

Box shelves are supported back and front with a welded box reinforcement underneath the shelf that greatly increases the strength on the longest dimension. This not only increases the capacity but also the longevity. See the chart above for the respective capacities of flange and box type shelves.

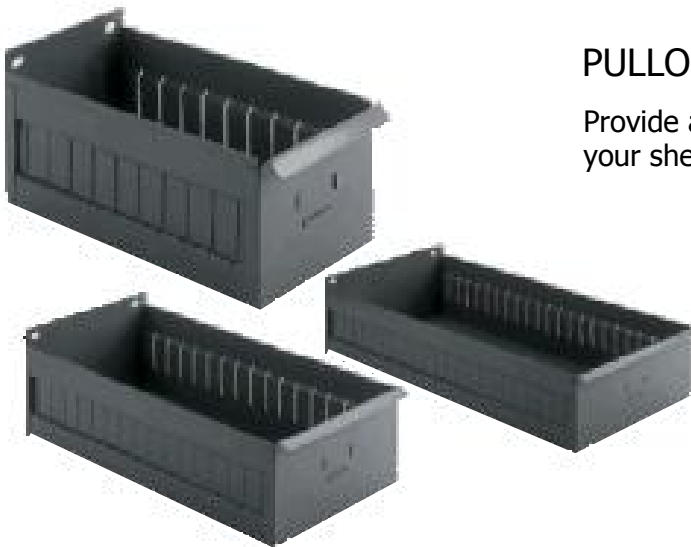
SHELF SPECIFICATIONS AND ACCESSORIES



MERITON BOX POST

These cold-rolled steel posts are formed to create a solid vertical support for our shelving system. Punched slots are designed to receive the shelf support clips. These posts are compatible with both the open and closed concept shelving.

Post Heights: 6'-1", 7'-1", 8'-1", 9'-1", 10'-1", 12'-1"



PULLOUT SHELF DRAWERS

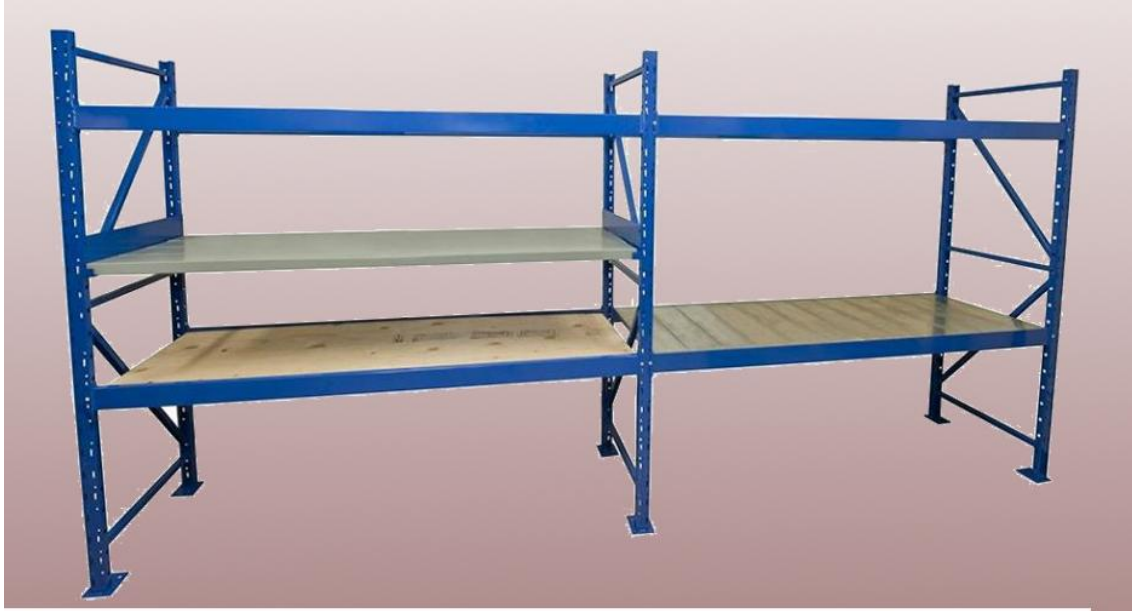
Provide a practical way to store parts and smaller articles in your shelf unit.



SLIDING DIVIDERS

These dividers are available in a wide choice of heights and may be moved laterally if desired to change to spacing per product location, or may be clamped to the shelf at various points with a removable nylon fastener.

MINIRACK SYSTEMS

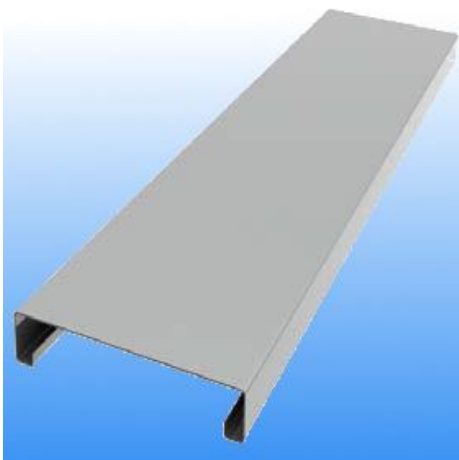


Mini-rack systems are available with greater shelf widths than ordinary steel shelving; moreover this style has a capacity of up to 2,000 lb per shelf. The frames and beams are made from cold rolled steel; the shelves are adjustable at 2" centers. Full shelves can be created by inserting wire mesh decks, wood or steel drop-in panels (see below). Ask the sales office for a complete chart of all available component sizes and capacities.

MINI-RACK ACCESSORIES FOR CREATING FULL SHELVES

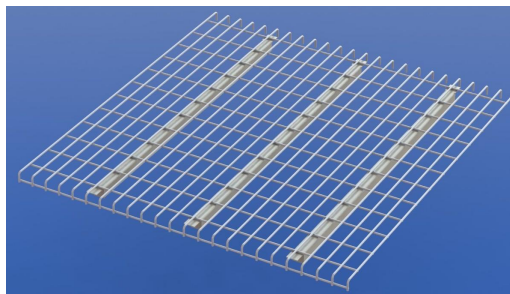
Steel Drop-in Panels

Made from various gauge galvanized steel sheet these panels are generally 6" wide and may be ordered in the length required to fit the depth of your shelving.



Wire Mesh Deck

These wire mesh panels have between 3 to 5 welded integral support bars. Available in waterfall (shown) style or instep (for use with step beams)



Open Steel Plank

These 14 gauge rollformed planks provide a uniformly strong surface for supporting a wide variety of non-standard dimension boxes and crates.



PARTS BINS

BINS

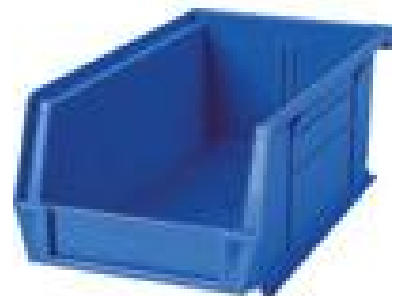


CF327
Jumbo Plastic Containers
Colour: Red
Dimensions W" x D" x H": 15 1/2 x 25 x 13
Capacity (lbs.): 200



CB668
Plastic Bins
Colour: Stone
Outside Dimensions W" x D" x H": 5 1/2 x 10 7/8 x 5
Bin Load Cap. lbs.: 30

CB096
Plastic Bins
Colour: Blue
Outside Dimensions W" x D" x H": 4 1/8 x 7 3/8 x 3
Bin Load Cap. lbs.: 10



CB663CB663
Plastic Bins
Colour: Green
Outside Dimensions W" x D" x H": 4 1/8 x 5 3/8 x 3
Bin Load Cap. lbs.: 10

CB099CB099
Plastic Bins
Colour: Blue
Outside Dimensions W" x D" x H": 5 1/2 x 10 7/8 x 5
Bin Load Cap. lbs.: 30



PARTS BINS

BINS



CB676CB676
Plastic Bins
Colour: Stone
Outside Dimensions W" x D" x H": 16 1/2 x 14 3/4 x 7
Bin Load Cap. lbs.: 75

CC245CC245
Hi-Stak Plastic Bins
Colour: Red
Outside Dimensions W" x D" x H": 7 7/8 x 17 11/16 x 7
Wt. lbs.: 0.55



CB108CB108
Plastic Bins
Colour: Blue
Outside Dimensions W" x D" x H": 8 1/4 x 14 3/4 x 7
Bin Load Cap. lbs.: 60

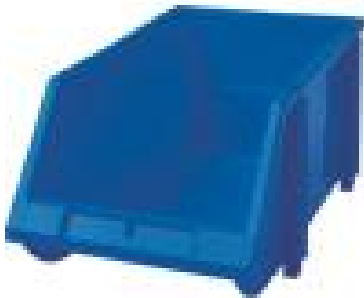
CB670CB670
Plastic Bins
Colour: Stone
Outside Dimensions W" x D" x H": 11 x 10 7/8 x 5
Bin Load Cap. lbs.: 50



CB266CB266
Hi-Stak Plastic Bins
Colour: Blue
Outside Dimensions W" x D" x H": 11 13/16 x 17 11/16 x 7
Wt. lbs.: 0.6

PARTS BINS

BINS



CB262CB262
Hi-Stak Plastic Bins
Colour: Blue
Outside Dimensions W" x D" x H": 5
7/8 x 9 13/16 x 4 11/16
Wt. lbs.: 0.15



CB664
Plastic Bins
Colour: Stone
Outside Dimensions W" x D" x H": 4
1/8 x 5 3/8 x 3
Bin Load Cap. lbs.: 10



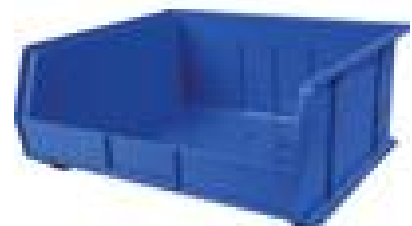
CC239CC239
Hi-Stak Plastic Bins
Colour: Blue
Outside Dimensions W" x D" x H":
7 7/8 x 17 11/16 x 7
Wt. lbs.: 0.55



CB101CB101
Plastic Bins
Colour: Yellow
Outside Dimensions W" x D" x H":
5 1/2 x 10 7/8 x 5
Bin Load Cap. lbs.: 30



CB675CB675
Plastic Bins
Colour: Green
Outside Dimensions W" x D" x H":
16 1/2 x 14 3/4 x 7
Bin Load Cap. lbs.: 75



CB111CB111
Plastic Bins
Colour: Blue
Outside Dimensions W" x D" x
H": 16 1/2 x 14 3/4 x 7
Bin Load Cap. lbs.: 75

PARTS BINS

BINS



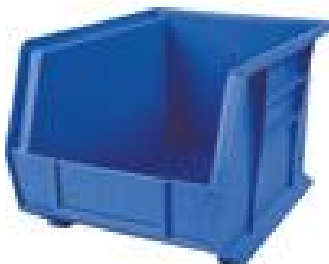
CB103CB103
Plastic Bins
Colour: Red
Outside Dimensions W" x D" x H": 11 x 10 7/8 x 5

CB669CB669
Plastic Bins
Colour: Green
Outside Dimensions W" x D" x H": 11 x 10 7/8 x 5



CB106CB106
Plastic Bins
Colour: Red
Outside Dimensions W" x D" x H": 8 1/4 x 10 3/4 x 7

CB100CB100
Plastic Bins
Colour: Red
Outside Dimensions W" x D" x H": 5 1/2 x 10 7/8 x 5



CB105CB105
Plastic Bins
Colour: Blue
Outside Dimensions W" x D" x H": 8 1/4 x 10 3/4 x 7

CF429CF429
Plastic Bins
Colour: Clear
Outside Dimensions W" x D" x H": 5 1/2 x 10 7/8 x 5

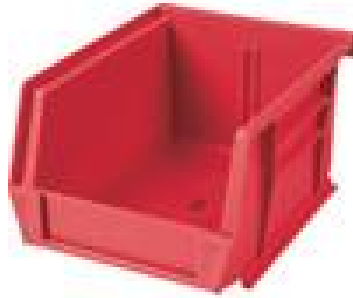


PARTS BINS

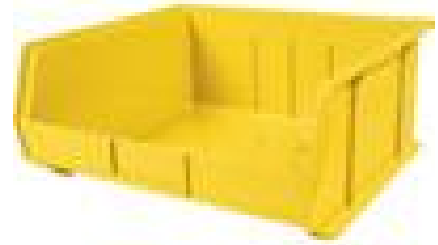
BINS



CC240CC240
Hi-Stak Plastic Bins
Colour: Yellow
Outside Dimensions W" x D" x H":
7 7/8 x 17 11/16 x 7
Wt. lbs.: 0.55



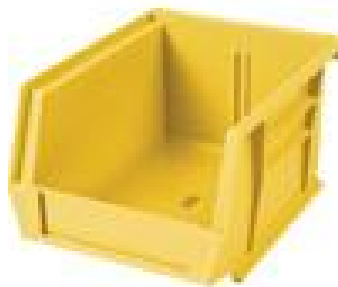
CB094CB094
Plastic Bins
Colour: Red
Outside Dimensions W" x D" x H": 4
1/8 x 5 3/8 x 3
Bin Load Cap. lbs.: 10



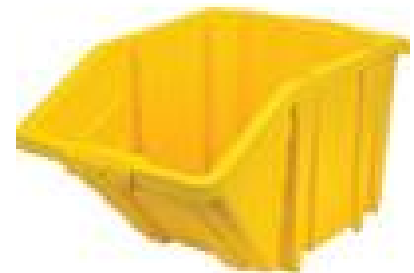
CB113CB113
Plastic Bins
Colour: Yellow
Outside Dimensions W" x D" x
H": 16 1/2 x 14 3/4 x 7
Bin Load Cap. lbs.: 75



CB665CB665
Plastic Bins
Colour: Green
Outside Dimensions W" x D" x
H": 4 1/8 x 7 3/8 x 3
Bin Load Cap. lbs.: 10

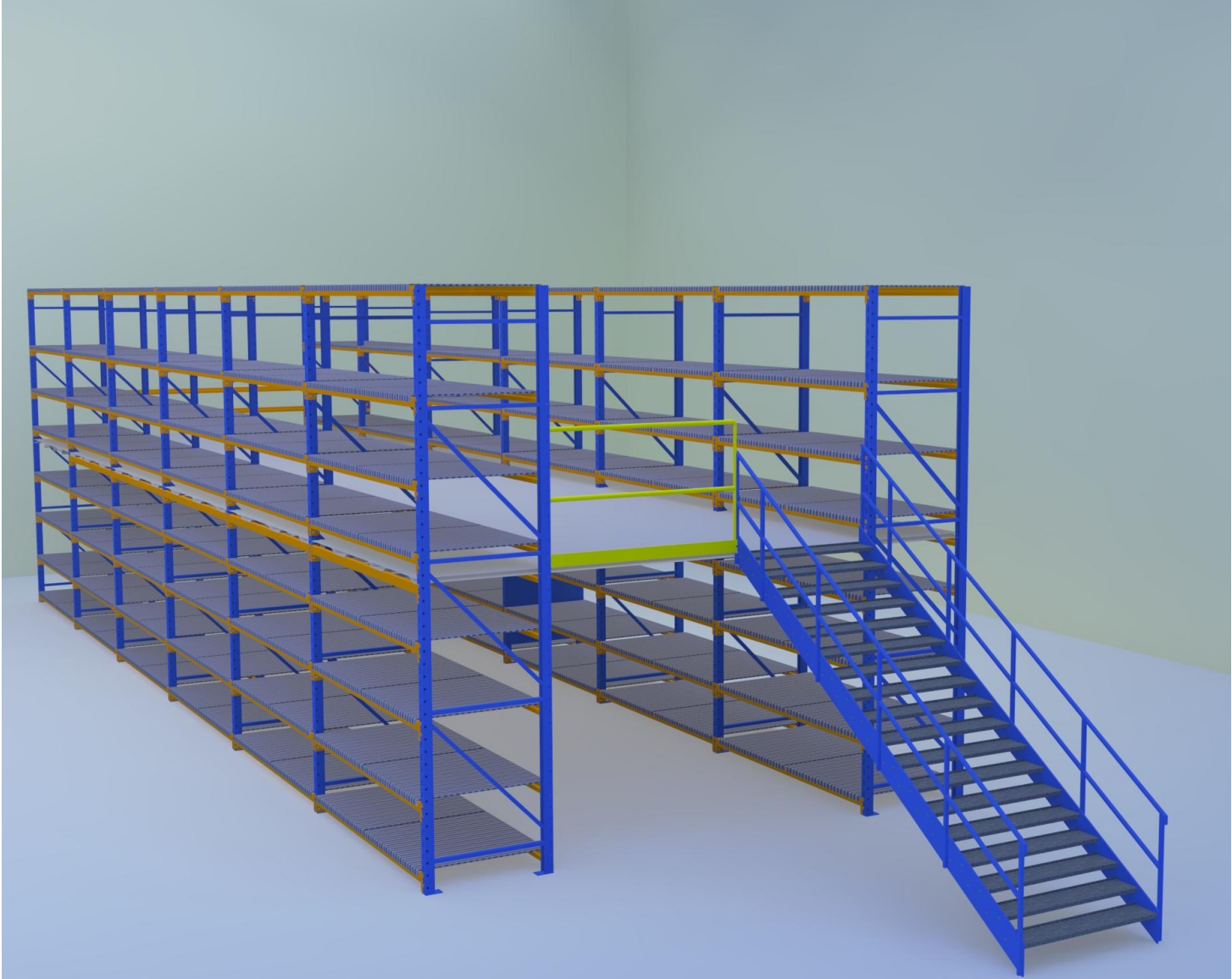


CB095CB095
Plastic Bins
Colour: Yellow
Outside Dimensions W" x D"
x H": 4 1/8 x 5 3/8 x 3
Bin Load Cap. lbs.: 10



CF330
Jumbo Plastic Containers
Colour: Yellow
Dimensions W" x D" x H": 15
1/2 x 25 x 13
Capacity (lbs.): 200

RACK SUPPORTED MEZZANINES



RACK SUPPORTED MEZZANINE

Picking mezzanines are designed to give access to the maximum number of products using a structure that costs less than a structural mezzanine.

Rack-supported mezzanines use the inherent strength of the rack to contain many shelf levels, and at the same time to support a floor or crosswalk. The floor may be specced for foot traffic only or we can engineer it to support a pallet lifter if pallets must be moved around.

Weight capacities for rack-supported mezzanines vary from 75 to 125 lb. per square foot depending on the application. All Meriton mezzanines are supplied with engineer stamped drawings.

You can now lease any model of our mezzanines - ask the sales office for details

STRUCTURAL MEZZANINES

Increase your manufacturing or warehousing capacity without moving.

Double your floor space without expensive renovations or new construction costs. Whether you need a more room for production, additional offices or more storage space for product or archives a mezzanine represents a wise investment. Meriton's modular mezzanines are engineered for safety and practicality with stamped drawings provided to ensure that the structure has been safety engineered. Our team will design, produce and install your industrial mezzanine with load capacity and configuration to match your particular requirements. Made from strong structural and rollformed steel components with a wide range of flooring, handrail and gate choices. We offer a turnkey project including installation of the structure and offices if required. Meriton mezzanines are completely modular and may be disassembled, transported and reinstalled in another location or building.



Additional options:

- Two level mezzanines
- Double thickness floor for heavy loads or for electric pallet truck traffic
- Integral upper level storage system with maximum provision for picking
- Available with integrated electric belt conveyor for the transfer of material up or down
- Installation of modular offices or closed work or production areas available as part of a turnkey project.
- Weight capacities for rack-supported mezzanines vary from 100 to 250 lb. per square foot. All Meriton mezzanines are supplied with engineer stamped drawings

ALL OF OUR MEZZANINES FEATURE:

- All-bolted modular assembly can be moved or added to
- Moisture-resistant floor available in a wide choice of materials from standard plywood or hdf to treated composites and poured epoxy finishes
- Heavy gauge 20 or 22 gauge ribbed steel underfloor provides the ultimate in floor support and rigidity
- Smooth sliding gates and reliable no-maintenance hardware
- Powdercoated finish is the most durable coating for mezzanines and is highly resistant to wear
- Competitive pricing on all structures and installation

You can now lease any model of our mezzanines - ask the sales office for details

MEZZANINE OPTIONS

Handrails



We offer a number of handrail configurations including models with 2 or 3 rails, or, for maximum security, we include integral wire mesh panels.

Access barriers

For a complete overview of mezzanine safety gates see page 43



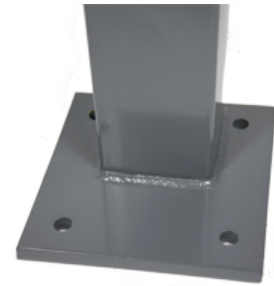
Barrière de sécurité de type basculante



Barrière coulissante

Components

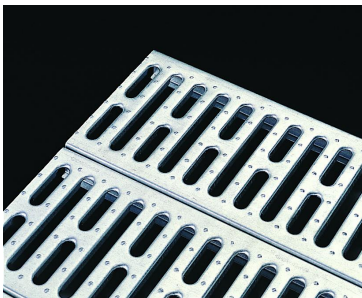
Typical column and base plate



Typical powdercoated steel joist

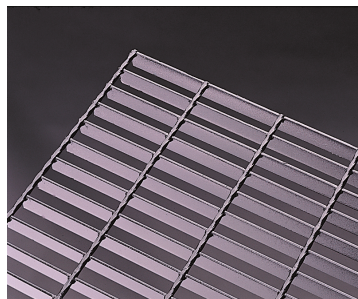


Floors



Open Steel Plank

This open plank floor is constructed of HD 14 gauge cold rolled steel profiles. The open concept allows air circulation, and also permits sprinkler water to fall through in case of fire. Anti-slip surface.



Bar Grating

This open style bar and rod grating is for heavy-duty industrial applications. The open concept allows air circulation, and also permits sprinkler water to fall through in case of fire.



ResinDek Flooring

Wide choice of HDF and ResinDek floors for any application. ResinDek floors come with a 7 year warranty. Available with a permanent epoxy seal.

PALLET RACK SYSTEMS



SINGLE DEEP SELECTIVE RACK

Single deep selective racking is the standard installation used in most warehouses. It is designed for storage of various size pallets in single deep rows that are accessible by both counterbalanced and reach forklifts, depending on the aisle space. The racks should be designed to mate with all aspects that influence the final efficiency including the equipment available and driver experience, and should conform to current rack standards. Meriton can provide certified installers and stamped engineering drawings where required. Many sizes and types of pallets can be accommodated, including overweight and non-standard sizes. Ask the sales office for a complete proposal based on your needs.

PALLET RACK SYSTEMS



DOUBLE DEEP SELECTIVE RACK

Double-deep selective racking eliminates many aisles by making the rows double-deep. Designed for use by purpose-built deep reach forklifts, this configuration is attractive where there are multiple pallets of the same material. It is a FILO system, and must be carefully designed to work properly with the building layout and equipment available.

The photo of the double deep installation is a 200,000 sq. ft. warehouse with a rack installation designed and sold by Meriton. We can advise you as to whether this configuration would be the best option to meet your current and future needs.

PALLET RACK SYSTEMS

DYNAMIC RACKING

Pallet flow racks are a type of dynamic rack that allows for high density storage with fewer aisles and FIFO picking where necessary. Ideal for food applications and for storage systems for product with a limited shelf life pallet flow racks are available up to 10 pallets deep. Ideally the pallet is loaded from behind and flows down to the pick face. For situations where space is tight the rear aisle can be eliminated, but the rack then becomes pushback storage and is no longer FIFO. We can suggest ways to best incorporate this type of storage system based on your product type, the flows and your warehouse layout.



PUSHBACK RACKING

Pushback racks are designed for storage of multiple pallets of the same SKU or product. The pallets are placed on carts (up to 5 deep) that rolls on rails by gravity towards the front. Best for operations that can accept FILO stock movement, pushback racks are convenient by always bringing a pallet to the pick face, thus eliminating the need for the forklift to go into the rack and bring the pallet out.

Pushback systems are usually custom designed for the application. Meriton's pushback carts are designed to accept a variety of different size and weight pallets, and are very reliable in their operation, due to the design of the rail and the cart wheel. Ask for a complete brochure that gives an in-depth explanation of the system features and advantages.



PALLET RACK SYSTEMS



DRIVE-IN RACK

Drive-in racks are designed for efficient storage of multiple pallets of the same size and carrying the same product. Tunnels are created to allow efficient storage without aisles. The pallets sit on rails that run from front to back. Drive-in racks can be as few as 2 deep or as many as 25 pallets deep. We have extensive experience designing and installing drive-in racks.

HD SHEET METAL RACK



These heavy-duty racks are designed for the storage of sheet metal and other bundle-type material. Made from extra thick gauge material, they are purpose-made for this demanding application.

Available with an engineer-stamped drawing if your application requires this. Capacities up to 10,000 lb. per level. Height and depth will vary with the material sizes. Forward your specs and requirements to the sales department for more information and a quote.

PALLET RACK COMPONENTS

PALLET RACK FRAMES



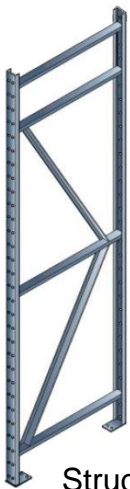
Welded frame

WELDED FRAME

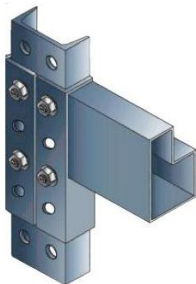
Welded frames have every joint welded by a certified welder. When the frame is damaged it can sometimes be repaired but usually requires complete replacement.

STRUCTURAL FRAME

Structural frames are made entirely from structural elements such as channels and angle iron. They will resist impacts better in a very cold environment such as a freezer. All joints are welded, therefore the entire frame must usually be replaced when damaged.



Structural frame



Structural beam

BOLTED FRAME

Bolted frames use grade 5 connectors to connect the support diagonals and horizontal braces. These connectors are permanently fastened at the factory and do not need tightening. The advantage of bolted frames is that any individual component may be unbolted and replaced when damaged without needing to replace the entire frame.



Bolted frame

PALLET RACK BEAMS

BOX BEAM

Rectangular load beams are used in many applications where the client wishes to use standard waterfall safety bars or wire mesh decks.



STEP BEAM

Step beams have a formed step that allows the safety bar to be clipped in instead of resting on top of the beam. This eliminates the need to fasten the safety bar to the beam with a tek screw.



STRUCTURAL BEAM

Structural beams are composed of structural steel channels and are excellent for very heavy loads and for freezer applications.

PALLET RACK COMPONENTS

PALLET SUPPORT BARS



Pallet support bars are used when the weight of the pallet is not entirely supported by the front and rear load beams. These extra-strong support bars run from the front load beam to the rear load beam and are designed to allow undersized pallets to be safely stored on standard sized pallet racks.

Pallet support bars can be custom made to fit your specific racks and are also available in the following standard sizes:

36", 42", 44" and 48" long

You must specify the weight that you need them to support at time of ordering.

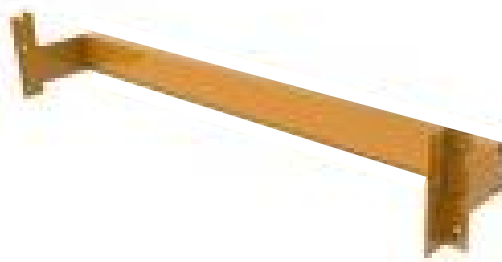
For safety bars and wire mesh decks see page 42

MISCELLANEOUS COMPONENTS - PALLET RACK



ROW SPACER

Row spacers are used to connect back to back rows for stability. Current rack standards make these connectors obligatory when there are back to back rows unless an engineer has approved an alternative method of stabilizing the racks.



BACK STOPPER BEAM

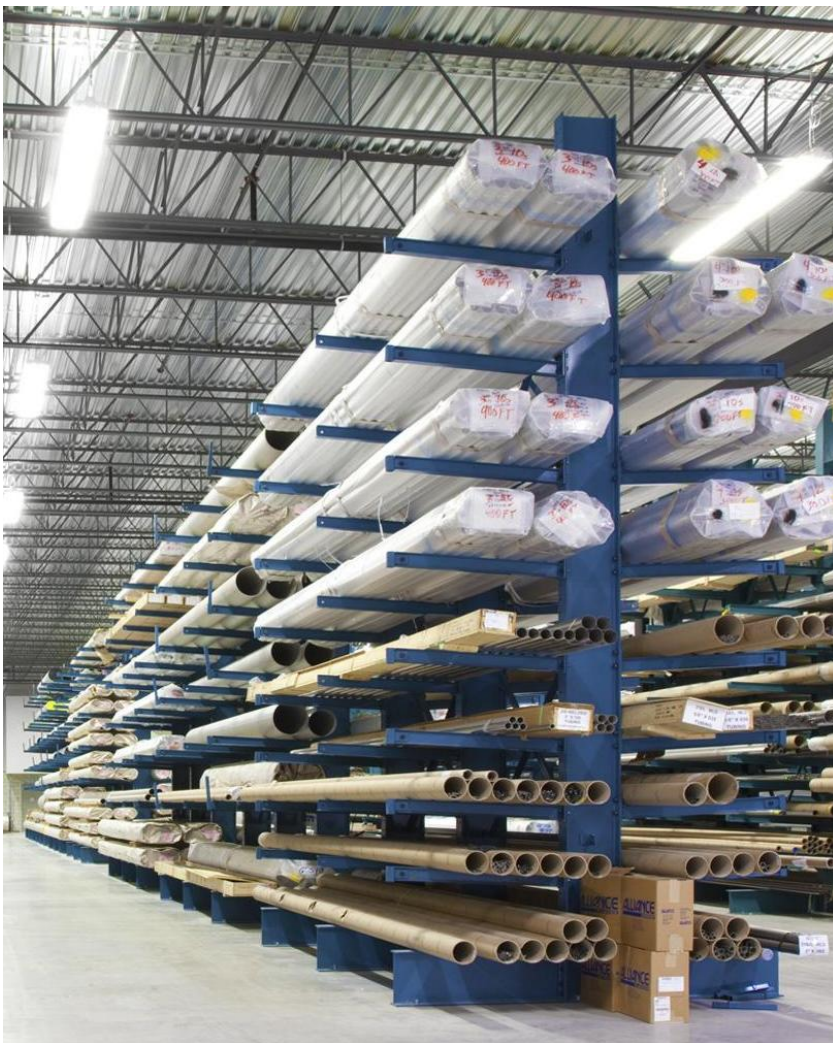
Back stopper beams are used at the rear of racks to prevent accidental damage to walls and for pedestrian safety. These beams are hooked into the standard pallet rack posts, usually at midpoint of the pallet at each level. They prevent the pallet from being pushed too far by the forklift driver and are also may be required to prevent pallets falling onto pedestrians should there be a pedestrian passage behind the rack. You may need to consult a safety engineer for the best solution for your exact requirement.

For safety bars and wire mesh decks see page 42

SPECIALTY RACKS

CANTILEVER RACKS

Cantilever racks must be engineered to fit the application, whether it is for storage of pipes, extrusions or bundles. The dimensions and weight of your articles are all taken into consideration in order to recommend the proper configuration of columns and arms for safety and functionality. We have many sizes and weights of structural columns and arms available for different size bundles and lengths. Capacities of up to 15,000 lb. per arm and columns up to 24' high are available. Please specify whether you require single-sided or double-sided cantilever racks.



Available in a wide range of heights, column spacing and arm lengths, this unique storage rack is ideal for many difficult-to-store items such as lumber, crates and structural members. Ask a technical rep to help you with a recommendation for your application. He will analyse your requirements and provide the necessary information to our engineers so that they can propose the most appropriate system for your needs.

SPECIALTY RACKS



VERTICAL PIPE & TUBE STORAGE

These racks are designed for the storage of rods, pipes and long lengths of various objects. They come with a capacity rating that allows you to meet work safe requirements for this type of rack. Designed for storage of lengths up to 20 ft, they feature all steel construction, and will provide an extremely efficient storage of a wide variety of long lengths of steel and plastic and other materials.

HORIZONTAL ROD & BAR STORAGE

These racks are designed for the storage of rods, pipes and long lengths of various objects. They come with a capacity rating that allows you to meet work safe requirements for this type of rack. Designed for storage of lengths up to 20 ft, they feature all steel construction, and will provide an extremely efficient storage of a wide variety of long lengths of steel and plastic and other materials.

Ask for a complete brochure and a price quote from the sales office.



SPECIALTY RACKS

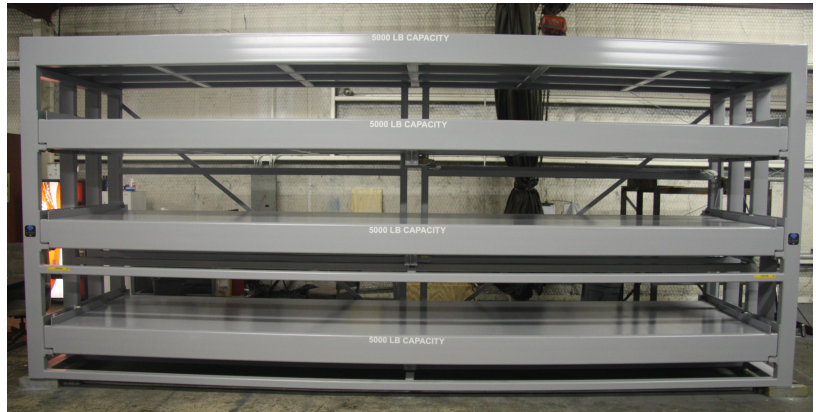


CUSTOM REEL RACK

These racks are custom designed for the storage of small rolls of wire and small reels. Each section has a solid sheet metal pan that is depressed in the centre specifically for holding round objects in a vertical position. The size, height and number of shelves can vary to suit your application..

HD PNEUMATIC RACK FOR MOULDS & DIES

These heavy-duty shelving units are designed for the storage of extremely heavy objects such as moulds and dies. They feature pull out shelves that are activated manually or pneumatically. When the pneumatic model is chosen the drawers open and close at the touch of a valve.



Shelving capacity up to maximum 5,000 lb/shelf

MOULD STORAGE SYSTEM WITH CRANE

The mould storage system can be used in conjunction with an overhead crane, forklift or mobile floor crane for transport of the mould or die to the production area. A safety interlock feature prevents the user from opening more than one shelf at a time. Storage capacity of up to 5,000 lb. per shelf available.



SPECIALTY RACKS



STACK RACKS

Stack racks are for storage of bulky material that is not adapted to storage by regular methods. Stackable up to 3 or 4 high they are available in standard sizes or can be custom built specifically for your application. As an option, these stack racks can be supplied with a knock down capability, to enable them to be shipped flat, in order to save shipping costs. Drop down access panels can be specified for either one or two sides, to facilitate access to the bottom of the container.



HD STORAGE RACK FOR DIES, CRATES AND MOULDS

These racks are designed to hold any size crate or skid, with a maximum capacity of 9,000 lb. per level. Designed with full shelves and multiple frames per section, this style gives the user maximum flexibility when the size and weight of the crate or mould can vary widely. Meriton offers a custom design service to ensure that the storage system will suit your product and application.



SECURITY ENCLOSURES



SECURITY ENCLOSURES

These security enclosures are constructed of sturdy posts and panel construction available in a wide variety of sizes. wire mesh is 2" x 2" 10-gauge wire welded at every joint and welded to the frame at every 6". All panels have 1/2" round reinforcing bars dividing the panels into three equal sections.

Posts are made from 2" x 2" 16 gauge square tubing, seam welded for perfect support and rigidity. and supplied with a 4" x 4" or 6" x 6" base plate. Panel frames are made of 1-1/4" x 1-1/4" angle structural steel, with corners notched and seam welded.

Security fencing is available up to 30" high. All components are coated in baked powdercoating, resistant to wear and scratching. Ask for a complete brochure on our security walls.



Enclosures may be ordered with painted sheet metal panels for sound and dust protection. Optional polycarbonate (Lexan) panels may be incorporated in upper or any portion of the wall system.

OPTIONS

A wide variety of doors, including sliding and swinging models are available. Roof panels to completely enclose the area are available

Keyed door locks or padlocks are available
Panels may be made from a variety of materials including high strength expanded metal for special high security applications, or clear or smoke-coloured Lexan

Call the sales office for a complete list of options and a quote for your requirement.

SAFETY DOORS

FOLDING ACCORDION GATES



SINGLE GATE STANDARD SIZES

STOCK NO	WIDTH (FT)	COLLAPSED HT.	IN USE HT
SG465	3' - 4'	6'-6"	6
SG480	6' - 8'	8'	7'-6"
SG565	4' - 5'	6'-6"	6'
SG585	4' - 5'	8'	7'-6"
SG665	5' - 6'	6'-6"	6'
SG680	5' - 6'	8'	7'-6"
SG765	6' - 7'	6'-6"	6'
SG785	6' - 7'	8'	7'-6"
SG865	7' - 8'	6'-6"	6'
SG885	7' - 8'	8'	7'-6"

These accordeon folding gates limit access to your building or critical areas while allowing ventilation and visibility. Available in single or double door models they can adjust to fit a variety of openings from as small as 3' and as large as 24'.

Larger models for wide openings come equipped with support wheels installed on the outer swing post. The doors provide an easy way to secure dock doors, end increase safety and security in the plant. May also be used in offices and front entrances as an deterrent to burglars.

DOUBLE GATE STANDARD SIZES

STOCK NO	WIDTH (FT)	COLLAPSED HT.	IN USE HT
DBL865	6' - 8'	6'-6"	6'
DBL880	6' - 8'	8'	7'-6"
DBL1065	8' - 10'	6'-6"	6'
DBL1080	8' - 10'	8'	7'-6"
DBL1265	10' - 12'	6'-6"	6'
DBL1285	10' - 12'	8'	7'-6"
DBL1465	12' - 14'	6'-6"	6'
DBL1485	12' - 14'	8'	7'-6"
DBL1665	14' - 16'	6'-6"	6'
DBL1685	14' - 16'	8'	7'-6"
DBL1865	16' - 18'	6'-6"	6'
DBL1885	16' - 18'	8'	7'-6"
DBL2065	18' - 20'	6'-6"	6'
DBL2085	18' - 20'	8'	7'-6"

LADDER SAFETY GATES

SELF-CLOSING LADDER SAFETY GATE

Available in powdercoated yellow, galvanized and stainless steel finishes the safety gates are required by work safe regulations in many provinces for access openings, to prevent falls.



Advantages

- Protects against falls through access openings
- Closes automatically when opened
- Economical
- Meets OSHA standards, available with stamped engineer drawing
- Easy installation in most applications, comes with adapter brackets

These finishes available for all models:

Powdercoated (safety yellow)
Galvanized
Stainless Steel (304/316L)
Aluminum



Uses:

Stair openings
Access ladders
Scaffolds
Mezzanines
Work platforms

SINGLE GATE MODEL

Prod. Code	For opening
LSG-15	13 ¾" - 17 ½"
LSG-18	16 ¾" - 20 ½"
LSG-21	19 ¾" - 23 ½"
LSG-24	22 ¾" - 26 ½"
LSG-27	25 ¾" - 29 ½"
LSG-30	28 ¾" - 32 ½"
LSG-33	31 ¾" - 35 ½"
LSG-36	34 ¾" - 38 ½"
LSG-40	37 ¾" - 42 ½"

Both the single and double gate models are certified to meet the requirements of Article 12 of the Règlement de la santé et sécurité du travail du Québec - a stamped letter from our engineer will be supplied upon request

DOUBLE GATE MODEL

Prod. Code	For opening
LSGDBL-9	16" - 22 ½"
LSGDBL-12	22" - 28 ½"
LSGDBL-15	28" - 34 ½"
LSGDBL-18	34" - 40" ½"
LSGDBL-21	40" - 46 ½"
LSGDBL-24	46" - 52 ½"

AVAILABLE ADAPTER BRACKETS



BRACKET LSG-LP-2204



BRACKET LSG-LP-2205



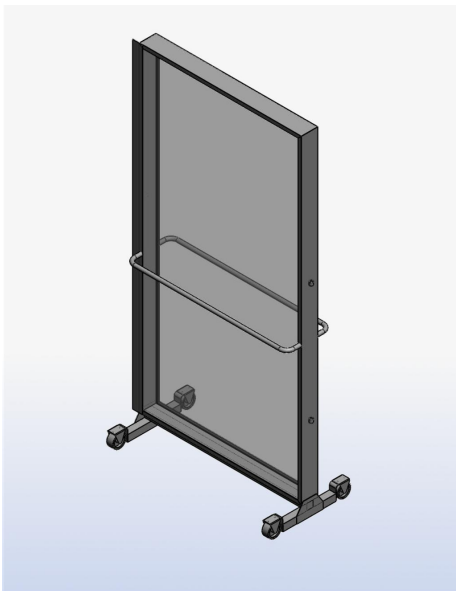
BRACKET LSG-LP-2206

RAILING SYSTEMS & BARRIERS



#1100 RAILING SYSTEM

An economical way to protect your personnel and equipment. Useful and practical for loading docks, pedestrian walkways and around floor openings. Constructed of structural steel tube that is welded into sections that are joinable using supplied hardware. This model is not designed to resist against forklift impacts, nor is it recommended for use on mezzanines or elevated platforms. Optionally available are wire mesh grid panels as shown and kickplates. Ask for a complete brochure from the sales office.



#2100 SCREEN PROTECTOR

This barrier consists of a impact-resistant polycarbonate panel in an aluminum frame. Protects passersby from injury caused by flying nails, grinding wheels, etc. May be jointed to other panels to form a protective wall around a complete area. Available in fixed (no casters) or mobile models. The mobile model is mounted on wear-resistant casters and allows the screens to be reconfigured easily. Standard size is 36" wide x 84" high.

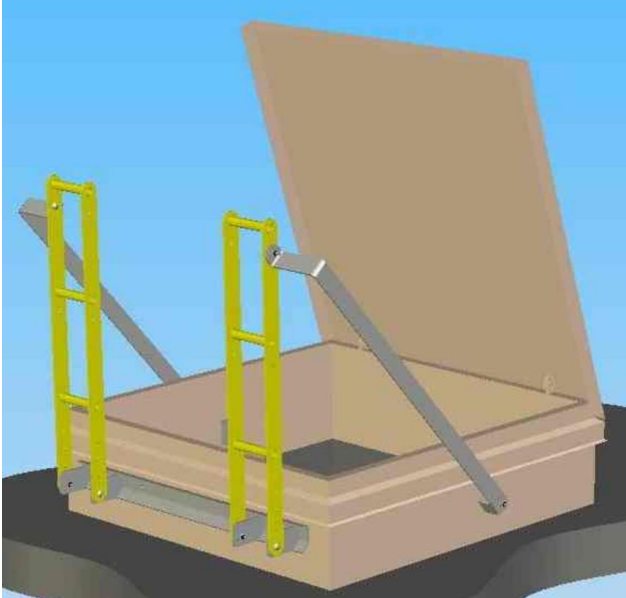


#3000 COLUMN PROTECTOR

A practical way to prevent column damage and possible personnel injuries. These high impact molded plastic protectors are designed to protect the column against forklift impacts. Installs in a few minutes without tools.

Product #	Column sizes
VB-6	6" SQ.
VB-8	8" SQ.
VB-10	10" SQ.
VB-12	12" SQ.
VB-8-10	8" x 10" RECT.
VB-9R	9" ROUND

ROOF SAFETY PRODUCTS



HATCH-GRIP

HatchGrip® provides ladder extension grips to the exterior of a roof hatch. These horizontal rungs ensure a firm, stable grip for employees exiting and entering your building's roof hatch. Simply mount HatchGrip to the exterior of your existing hatch to provide employees with a safe and easy rooftop transition.

HatchGrip is not intended to act as a barrier for guarding your rooftop opening. For a fall protection solution, please see the PS DOORS' HatchSafe® product.

Standard Features:

- Bolts to roof hatch curb with gasketed connection
- Adjustable to fit hatch size up to 36" wide curb
- Powder coat gray non-slip finish for durability in exterior environments
- Provides variable height adjustments for proper and comfortable grip spacing from the last rung of the ladder
- Ships knocked-down for easy shipping, handling, and transporting to installation area
- Easily installed using only a few common tools



HATCH-SAFE

Never leave your roof hatch opening unprotected! HatchSafe® is a full perimeter railing system with a self-closing safety gate and integrated HatchGrip® horizontal grab bars. This product provides permanent, four-sided protection designed specifically for your roof hatch opening, ensuring a safe, stable grip for employees entering and exiting the roof hatch.

Standard Features:

- Available in mild steel or stainless steel, with powder coat gray finish
- Six (6) standard sizes
- Adjustable to properly fit roof hatch curb irregularities, attaches to existing curb
- Includes all hardware required for installation
- Railing meets OSHA railing standards
- Ships knocked-down for easy shipping, handling, and transportation to installation site

Application Use:

- Roof hatch openings
- Floor hole openings
- Custom sizing and design available

ROOF SAFETY PRODUCTS

RAILGUARD #200 ROOF PROTECTION BARRIER



A roof edge fall protection system is critical to eliminating injuries and saving lives.

Local worksafe regulations often require that a fall protection system be incorporated anytime workers access the roof. Roof hatches, HVAC units, vents, scrubbers and leading edge areas are all areas that need fall protection. The Railguard 200 Railing System offers the perfect non-penetrating system to protect all these areas. Simply put the base plate of these safety barriers down on the roof, insert the railing and pin together. You never have to drill into the roof or anchor to the substrate. Railguard 200 qualifies as a Motion Stopping Safety Railing and can be used right on the roof edge for effective fall protection.

Inquire with our sales office for the sizes of barriers that are available, as well as for pricing.

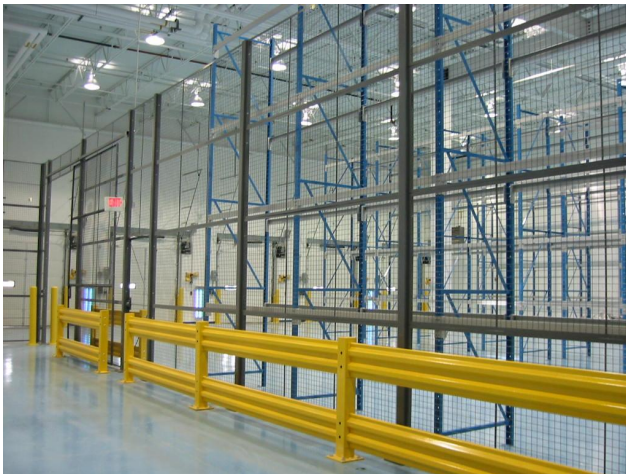
MISC. SAFETY PRODUCTS



RACK BACK GUARD FENCE

Anti-fall protection for pedestrian passageways

Worksafe regulations require protection for pedestrians along pedestrian walkways. These wire mesh panels are designed specifically to provide fall protection for pallet racking. Standard widths are 8', 9', 10' and 12'. Standard heights are 3', 4' and 5'. A sketch of your rack configuration will allow us to quote the required back panels protect your personnel and meet current regulations.



HIGHWAY STYLE HI-IMPACT BARRIER

Tested against forklift impacts

These super-resistant barriers have been tested against forklift impacts of 10,000 lb. at 4 mph. Install a heavy-duty guardrail barrier system and create a protective wall of steel between your workers and your equipment. It's the trouble-free solution to your peace of mind. That means the people and equipment on your shop floor will remain protected from traffic accidents and other hazards. Use heavy-duty guardrail to safeguard conveyor systems, manufacturing equipment, electrical panels, computer stations, staircases and walkways, in-plant offices, first aid and restroom areas, or anywhere else crash protection is required.

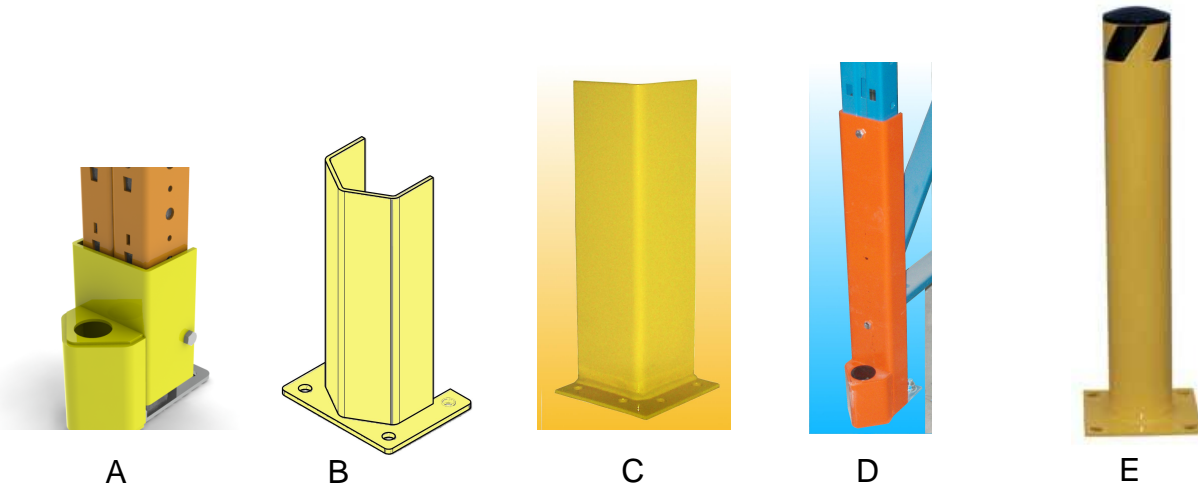
WELDED MACHINE GUARD BARRIER

These HD welded machine guards are constructed of welded 4" x 4" structural tube with connectors to make assembly in the field a simple task. Powdercoated with a tough poly finish in safety yellow. Furnish us with your dimensions or a sketch of the area to be protected and we will produce a detailed quote including hardware and all materials needed to install.



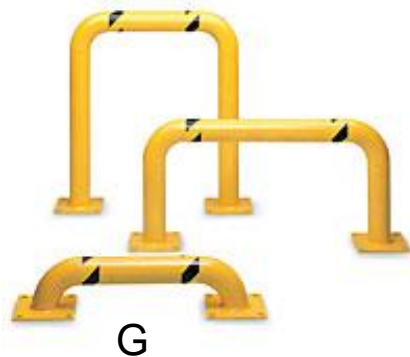
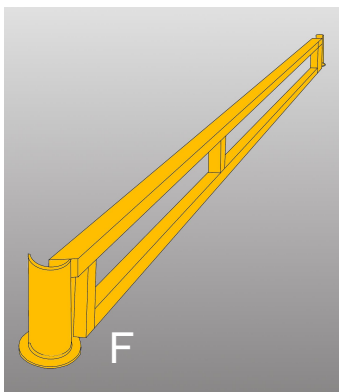
MISC. SAFETY PRODUCTS

POST PROTECTORS



- A. Bolt-on Stubby Protector- used when there is a bottom beam level close to the floor
- B. Independent Post Protector, 12" high, with 4 anchor holes, takes 1/2 wedge-type anchor.
- C. Independent Square Corner Protector, 18" high, with 4 anchor holes, takes 1/2" wedge-type anchor
- D. Bullnose Protector, 24" high, attaches to 3.25" wide frame, and has hole for (1) 5/8" floor anchor in the front
- E. Steel Bollard 42" high, safety yellow, bolts to floor with (4) 1/2" wedge-type anchors

PROTECTORS FOR END OF ROW, MACHINERY AND WALKWAYS

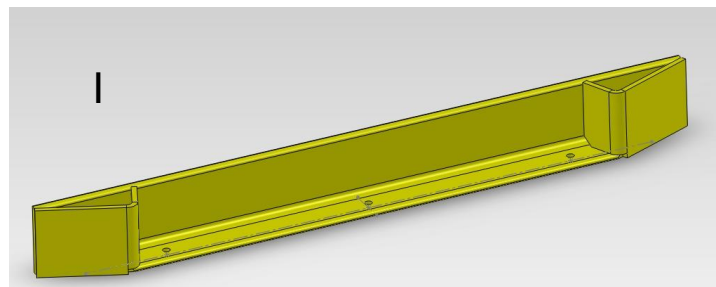


F. Custom End of Row Protector with two rails and half moon curved ends

G. Tubular Barriers serve as end of row protectors, machine guards and pedestrian walkway protectors.

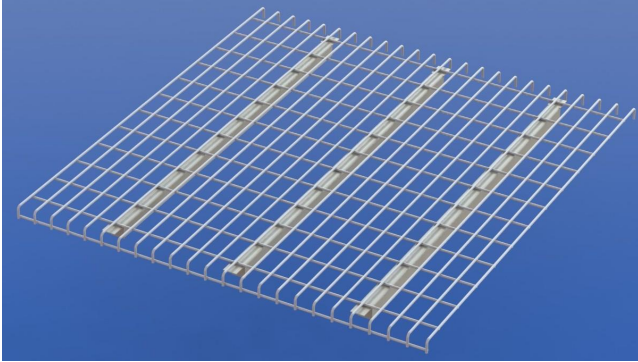
H. HD Angle 6" x 6" End of Row Protector with integral half moon curved end piece. Available as curved end piece one end or both ends.

I. Standard HD End of Row Protector, please specify length required.

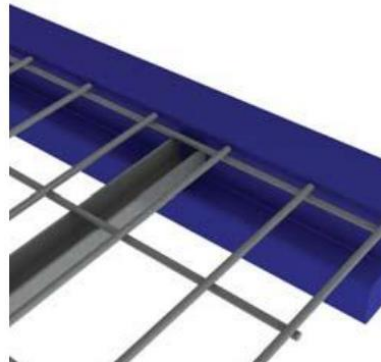


RACK SAFETY

WIRE MESH DECKS



Waterfall style, fits box beam



Instep style, fits step beam

Wire mesh decks provide an extra margin of safety compared to standard safety bars. They are generally supplied so that there is one deck per pallet position.

PART #	DESCRIPTION	SIZE	NO. OF WELDED SUPPORT BARS	STYLE OF BEAM
WMD3646	Wire mesh deck, powdercoated, for 36" deep racking	36" X 46"W	3	SPECIFY STEP OR BOX BEAM
WMD3652	Wire mesh deck, powdercoated, for 36" deep racking	36" X 52"W	4	SPECIFY STEP OR BOX BEAM
WMD3659	Wire mesh deck, powdercoated, for 36" deep racking	36" X 59"W	5	SPECIFY STEP OR BOX BEAM
WMD4246	Wire mesh deck, powdercoated, for 42" deep racking	42" X 46"W	3	SPECIFY STEP OR BOX BEAM
WMD4252	Wire mesh deck, powdercoated, for 42" deep racking	42" X 52"W	4	SPECIFY STEP OR BOX BEAM
WMD4259	Wire mesh deck, powdercoated, for 42" deep racking	42" X 52"W	5	SPECIFY STEP OR BOX BEAM
WMD4846	Wire mesh deck, powdercoated, for 48" deep racking	48" X 46"W	3	SPECIFY STEP OR BOX BEAM
WMD4852	Wire mesh deck, powdercoated, for 48" deep racking	48" X 52"W	4	SPECIFY STEP OR BOX BEAM
WMD4859	Wire mesh deck, powdercoated, for 48" deep racking	48" X 59"W	5	SPECIFY STEP OR BOX BEAM

SAFETY BARS & PALLET SUPPORT BARS

SAFETY BARS

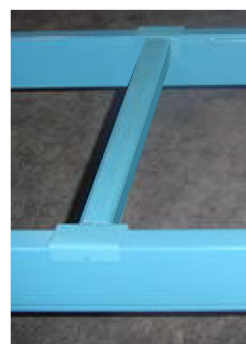
Safety bars are usually installed at a ratio of two per pallet position. A variety of styles is available as shown at right, to meet different requirements depending on your rack style.

PALLET SUPPORT BARS

Pallet support bars (not shown) are extra heavy-duty safety bars that are made to support the entire weight of a pallet. Series PSB



Clip-in style safety bar Series CISB



Welded cup style safety bar Series WSB



Universal Stamped type safety bar Style USB

MEZZANINE SAFETY BARRIERS

PIVOTING BARRIER #5100



The Meriton Pivoting Mezzanine Barrier offers the ultimate in safety where there is a need to protect openings on mezzanines and elevated platforms. Available in a wide range of sizes these barriers protect against falls from heights by preventing access to the opening in the mezzanine at all times to personnel working there. A 3 rail barrier prevents access to the opening for persons on the mezzanine. When the load needs to be moved from the opening the barrier pivots and closes the space behind the pallet thus allowing it to be moved without creating an opening or gap that would compromise safety. The middle section is independent from the pivot component therefore the depth may be adjusted to suit changing needs without you having to buy a new gate. Made from powderdercoated steel.

SLIDING BARRIER #5200

Meriton sliding safety gates allow you to easily access your mezzanine in constricted areas. Available in 2-rail, 3-rail and wire mesh configurations, each conveniently designed to accommodate your handrail selection. Choose between six standard sizes to best suit your needs. A padlock hasp lock mechanism is included with each gate. All standard Meriton gates are sealed in a powder-coated safety yellow paint finish for maximum visibility.



SWING BARRIER #5300

To use our Meriton Pallet Gate simply forklift your pallet of material through the self-closing pair of gates and back away. The Meriton Pallet Gate closes up against your material, protecting your mezzanine edge until the pallet is removed from opening. The gates are equipped with stainless steel springs and will return automatically to their closed position as soon as the pallet is moved away. When not in use, the Pallet Gate acts as a safety railing to protect employees from falls from height. Available in two standard sizes. Comes equipped with vertical guide posts and high impact rubber bumpers. Includes all hardware. Powdercoated finish.

