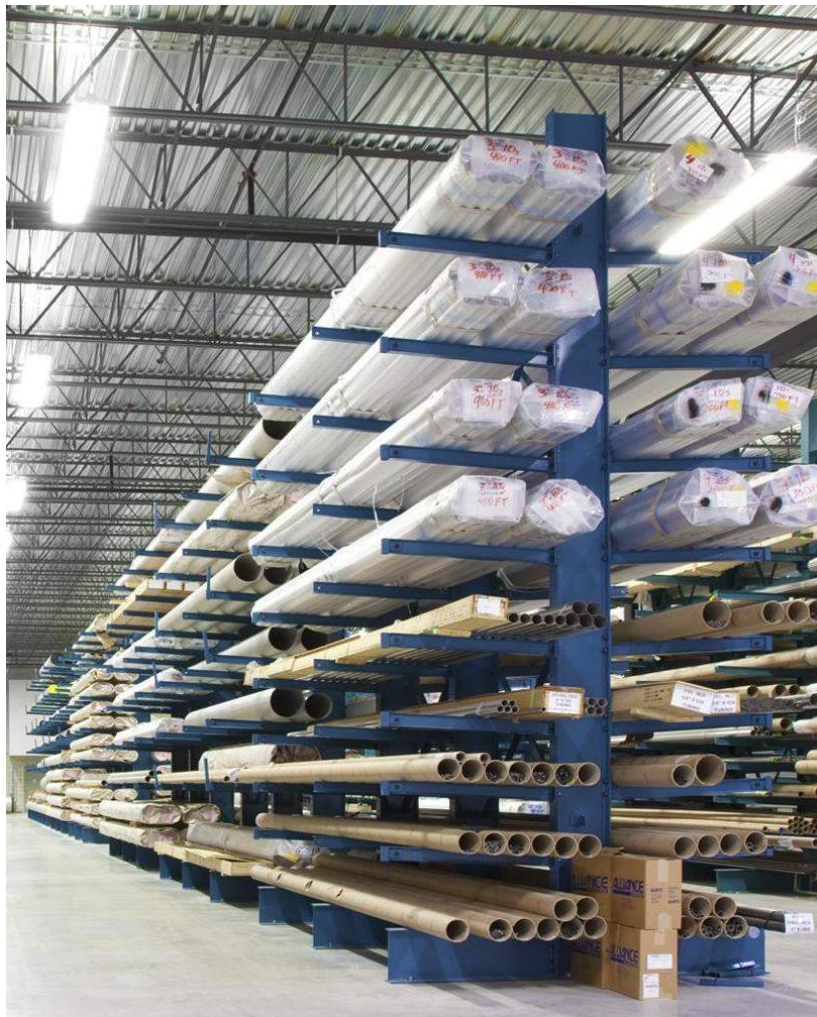


MERITON CANTILEVER RACKS

CANTILEVER RACK SYSTEMS

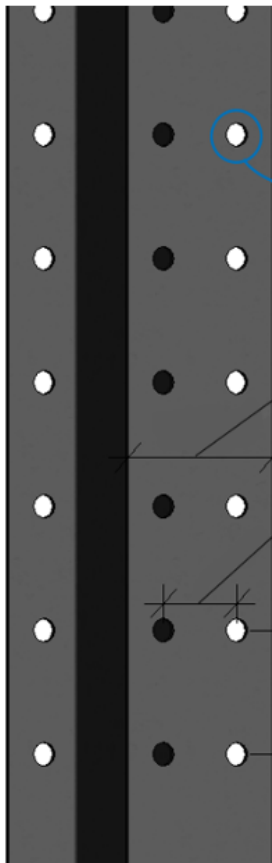
Cantilever racks must be engineered to suit the application intended. There are certain safety considerations that must be taken into account including the capacity of the arms and columns, the dimensions, configuration, weight and type of material to be stored, the free height in your building and how the material will be accessed. Meriton has the expertise to analyze your needs and specify the correct cantilever racking to suit your exact needs.



Available in a wide range of heights, column spacing and arm lengths this type of racking is ideal for difficult to store articles such as wood, crates, profiles, piping and structural metal extrusions. Ask one of our technical reps to help you specify the appropriate solution with corrected spec'd components to store your material in a safe, efficient manner.

MERITON CANTILEVER RACKS - COLUMNS

TYPE 1 MEDIUM CAPACITY COLUMN



9/16" hole diameter used for:
3" or 4" MD arms
11/16" hole diameter used for:
4" HD, 5" HD and 5.5" HD arms

4" Flange Column Width

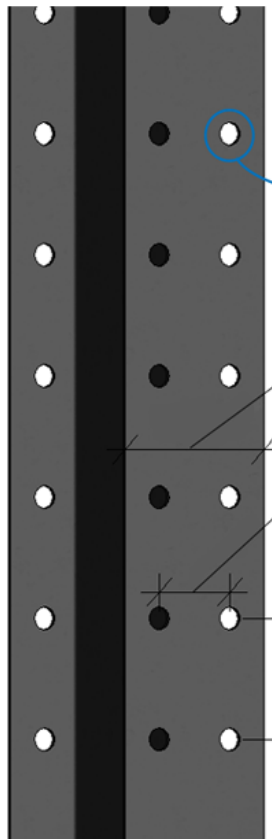
2" bolt spacing

3" arm adjustment
(when used with MD arms)
4" arm adjustment
(when used with HD arms)

Specifications

Column	Type 1 single or double-sided
Punched hole	see drawings at left
Width	4" flange
Finish (interior)	Fast dry enamel paint

TYPE 2 HEAVY-DUTY COLUMN



13/16" dia. hole used for 3" MD
& 4" MD, 4" HD, 5" HD, 5.5" HD
& 6" HD arms

5" Flange Column Width

2 3/4" bolt spacing

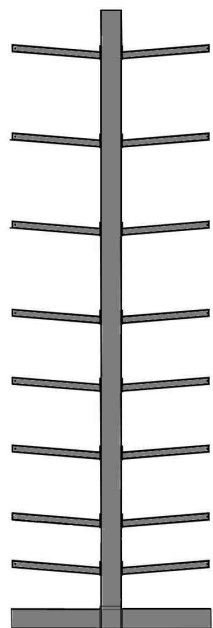
4" arm adjustment

Specifications

Column	Type 2 single or double-sided
Punched hole	see drawings at left
Width	4" flange
Finish (interior)	Fast dry enamel paint

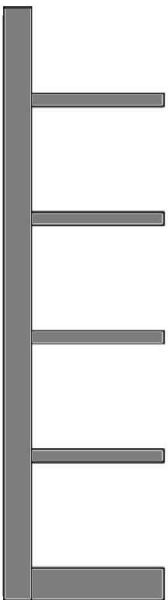
MERITON CANTILEVER RACKS- CONFIGURATIONS

COLUMN CONFIGURATION



DOUBLE-SIDED COLUMN

Cantilever rack systems with double-sided columns allow you to store material on both sides of the column as shown at left.

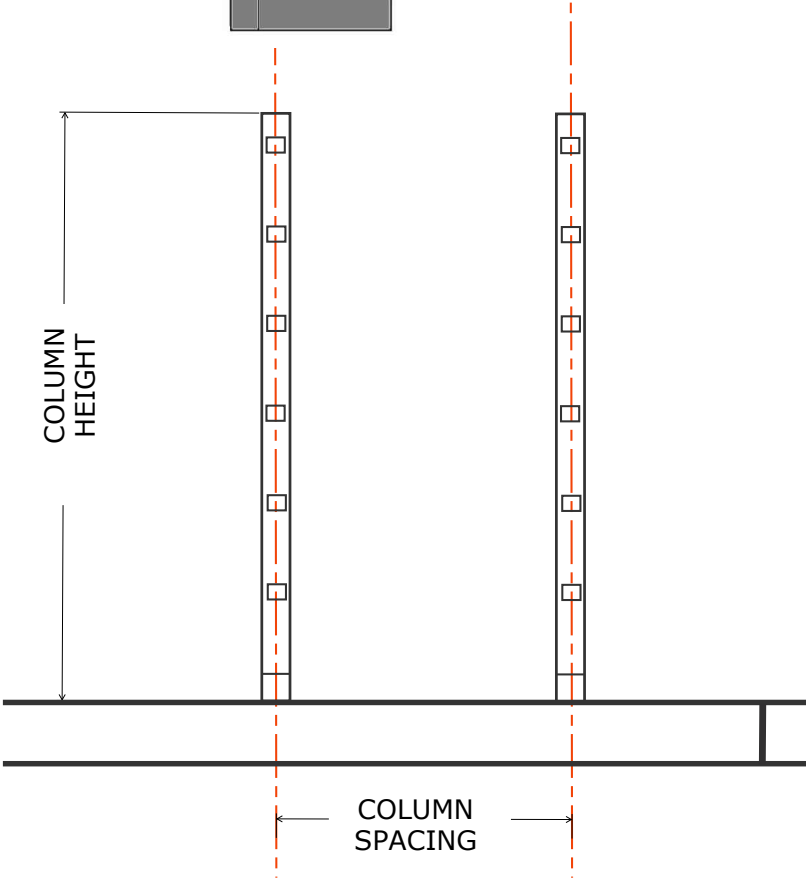


SINGLE-SIDED COLUMN

Cantilever systems with single-sided columns as shown at left permit storage on only one side of the column.

CHOICE OF COLUMN HEIGHTS

The columns are available in heights varying from 6' to 24' in increments of 12".

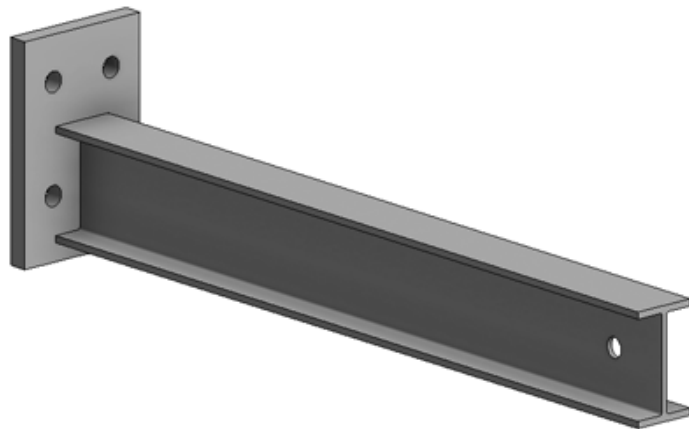


CHOICE OF COLUMN SPACING

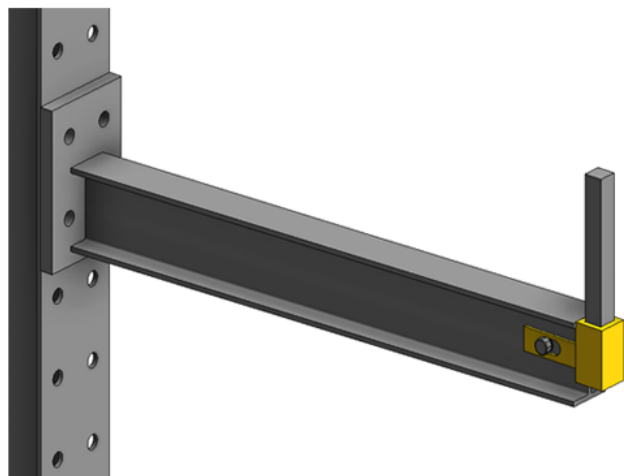
The columns may be spaced at intervals varying from 2'-6" to 8'.

MERITON CANTILEVER RACKS- ARMS

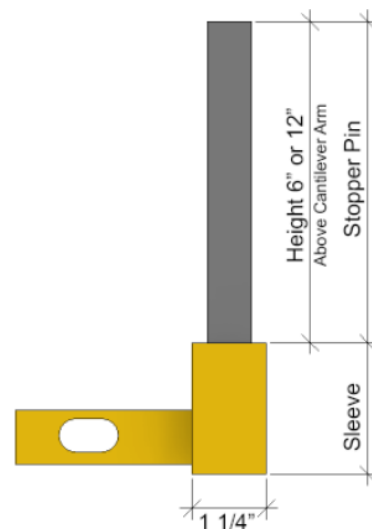
STRUCTURAL ARMS



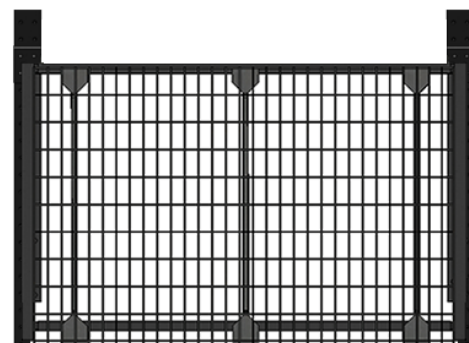
Structural arms are suitable for most cantilever storage applications. They consist of a I-beam profile welded to a plate connector and are manufactured with an incline of 1.5° or 3° from horizontal. The arms are classified as MD or HD, referring to their weight capacity (MD meaning light-duty and HD meaning heavy-duty). The varying lengths of arms available are shown in the chart below. The supported load should be placed centered on the arm and should refrain from exceeding the edge of the arm. The plates are either $1\frac{1}{2}$ " thick or $5\frac{5}{8}$ " thick and have four $\varnothing 13/16$ " or $\varnothing 1/2$ " punched holes at each corner. The plate requires 4-ASTM A325 structural bolts specified and tested for this specific purpose.



Material	Steel
Length	12", 18", 24", 30", 36", 42", 72", 78", 84", 90", 96"
HD	Haute capacité
LD	Moyenne capacité
Orientation	1"5 dég. ou 3 dég. de l'horizontal
Finition	Peinture à la poudre cuite, galvanisé (option)
Quincaillerie	Grade 5



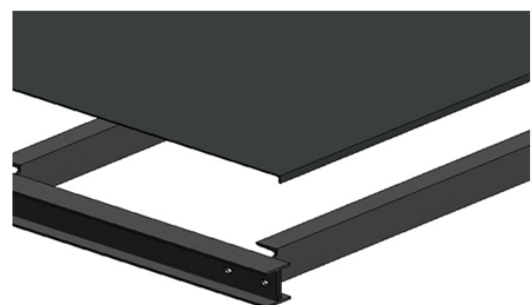
MERITON CANTILEVER RACKS- OPTIONS



Wire Mesh Deck for Cantilever

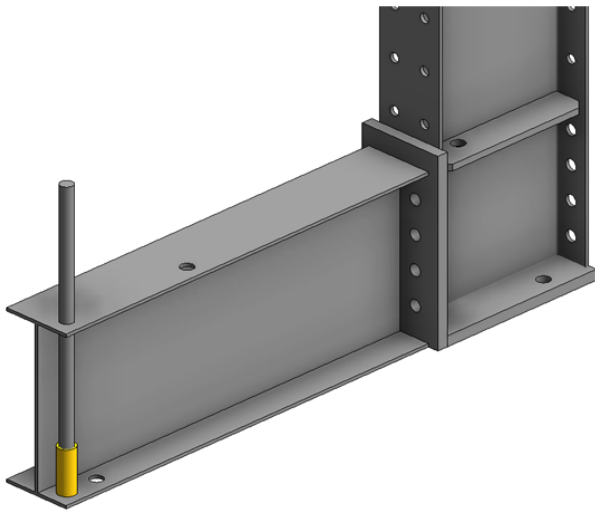


Plywood Full Shelf for Cantilever

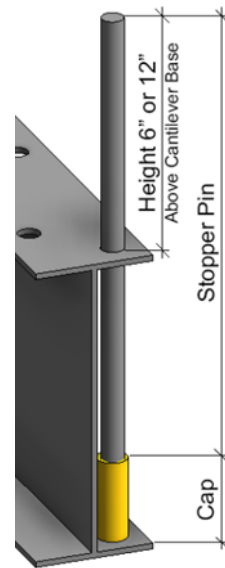


Sheet Metal Full Shelf for Cantilever

MERITON CANTILEVER RACKS- OPTIONS



COLUMN BASE REMOVABLE STOPPER PIN



COLOUR CHART



Standard colour: medium gray

The colours below are available as an option, at extra charge.



Steel Blue



Midnight Black



Crisp White



Deep Sea Blue



Sandy Beige



Forest Green



Burnt Orange



Ruby Red



Safety Yellow



MERITON INDUSTRIES

108 Gun Ave, Pointe-Claire, QC H9R 3X3

1-800-465-3695

info@meritonindustries.com www.meritonindustries.com